



Reproduction of photo of Raymond Camps Home
- Branch Hill (Coll. 001 Fold. 028 Photo 001)



Home of James Hyde Fitch (Coll. 001 Fold. 030
Photo 001)



Benjamin Property notes (Coll. 003 Fold. 006
Doc. 006)



Amos Brown Business Record (Coll. 003 Fold.
009 Doc. 001)

Land Transfers (Tracy/Fobes/Meech/Crary)
(Coll. 003 Fold. 018 Doc 023)

Land Plots (multiple) (Coll. 003 Fold. 018 Doc.
015)

Land plot notation 1/353 (1702) (Coll. 003 Fold.
018 Doc. 016)

Land boundary (Coll. 003 Fold. 018 Doc. 017)

Land Transfer Tracy to Fobes Notation 9/23
(1771) (Coll. 003 Fold. 018 Doc. 018)

Land Transfers (multiple) Fobes/Morgan/Meech
(Coll. 003 Fold. 018 Doc. 019)

Land transfers (Fobes/Tracy/Rudd) and Bounds
Agreement (Coll. 003 Fold. 018 Doc. 020)

Land Transfer (Fobes/Bishop/Gates) (Coll. 003
Fold. 018 Doc. 022)

Land Transfers-Multiple
(Tracy/Fobes/Ames/Treat/Rosseter/Smith (Coll.
003 Fold. 018 Doc. 024)

Land transfers (multiple)
Amos/Fobes/Tracy/Branch/Rudd/Rude/Rood/Roode
(Coll. 003 Fold. 018 Doc. 025)

Land Transfers
(Rudd/aMOS/Tracy/Fobes/Minor/Rude) (Coll.
003 Fold. 018 Doc. 026)

Land Transfers
obes/Tracy/Rude/Cooke/Oeneco/Gates/Branch/Am
(Coll. 003 Fold. 018 Doc. 027)

Land transfers
Fobes/Barstow//Meech/Morgan/Peters/Starkweathe
(Coll. 003 Fold. 018 Doc. 029)

Caleb Fobes Land (Coll. 003 Fold. 018 Doc. 030)

Land Transfers (Tracy/Fobes/Crary) (Coll. 003
Fold. 018 Doc. 031)



Land deal between Thomas Meech and Capt.
Ezekiel Rude (Coll. 003 Fold. 037 Doc. 005)



Safford land records for 1724, 1753, and 1785
(Coll. 003 Fold. 038 Doc. 005)



1694-1798 Safford land information taken from
Preston Land Records (Coll. 003 Fold. 038 Doc.
008)



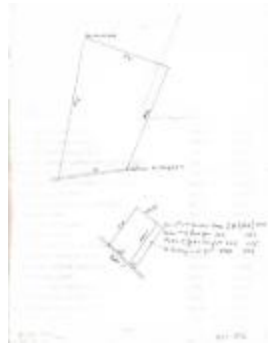
Coll. 003 Fold. 041 Doc. 006 Standish land deed
info (Coll. 003 Fold. 041 Doc. 006)



Standish land information 1800s (Coll. 003 Fold.
041 Doc. 008)



Poquetanuck land ownership @ late 16th century on (Coll. 003 Fold. 075 Doc. 004)



Unknown property diagram (Coll. 003 Fold. 075 Doc. 005)



Diagram of property off of School House Rd., Preston (Coll. 003 Fold. 075 Doc. 006)



Diagram of Poquetanuck property ownership before 1800 (Coll. 003 Fold. 075 Doc. 007)



#367 Capt. Williams Property (Coll. 003 Fold. 075 Doc. 008)

Pickett and Capron land diagram (Coll. 003 Fold. 075 Doc. 009)



Notes on Erastus Brewster 2nd and Allyn Chapman property (Coll. 003 Fold. 075 Doc. 011)



1814 Land description of David Avery to Cyrus Punderson (Coll. 003 Fold. 075 Doc. 012)



Preston land records 1715-1770 (Coll. 003 Fold. 075 Doc. 016)



#172 Joseph Chafitz (Coll. 003 Vol. 002)



#91 Chester Thurston (Coll. 003 Vol. 002 Doc. 018)



#72 Congregational Parsonage (Coll. 003 Vol. 002 Doc. 003)



The Meeches (Coll. 003 Vol. 002 Doc. 005)



#74 Jesse O. Crary Home (Coll. 003 Vol. 002 Doc. 006)



#86 George Abrahamson (Coll. 003 Vol. 002 Doc. 013)



The Forbes Family (Coll. 003 Vol. 002 Doc. 017)



#94 Walter McClimon (Coll. 003 Vol. 002 Doc. 021)



#98 Frank Robbins (Coll. 003 Vol. 002 Doc. 024)

#99 Deacon William Loring (Coll. 003 Vol. 002 Doc. 026)



#103 Nicholas Leonard Farm (Coll. 003 Vol. 002 Doc. 033)



#105 George E. Bates land (Coll. 003 Vol. 002 Doc. 034)



#105A Benjamin Ellal Place (Coll. 003 Vol. 002 Doc. 036)



#105B Mrs. Anna Iwan (Coll. 003 Vol. 002 Doc. 037)



#106 William Sebastian (Coll. 003 Vol. 002 Doc. 038)



#107 Edwin Benjamin (Coll. 003 Vol. 002 Doc. 039)



#108 Captain Moses Hillard (Coll. 003 Vol. 002 Doc. 040)



109 Henry R. Sebastian (Coll. 003 Vol. 002 Doc. 041)



#110 A Arthur McGee (Coll. 003 Vol. 002 Doc. 042)



#111 Daniel MacAvoy (Coll. 003 Vol. 002 Doc. 043)



#114 The Toll Gate Farm (Coll. 003 Vol. 002 Doc. 045)



#116 Henry B. Bates #117 James B. Bates #118 John F. Richardson (Coll. 003 Vol. 002 Doc. 046)



120 Walter Krohn (Coll. 003 Vol. 002 Doc. 048)



#122 The Charles Miner Property (Coll. 003 Vol. 002 Doc. 050)



#128 Amasa Main (Coll. 003 Vol. 002 Doc. 052)



Hezekiah Park (Coll. 003 Vol. 002 Doc. 054)



132 Florak (Coll. 003 Vol. 002 Doc. 058)



Cooktown (Coll. 003 Vol. 002 Doc. 076)



#152 John Niewiarowski (Coll. 003 Vol. 002 Doc. 084)



153 Ray LaPrade (Coll. 003 Vol. 002 Doc. 085)



#155 Joseph Davis Place (Coll. 003 Vol. 002 Doc. 087)



#157 & #158 Isaac Dawley (Coll. 003 Vol. 002 Doc. 089)



#166 Henry Frink (Coll. 003 Vol. 002 Doc. 099)



#169 The Lighthouse (Coll. 003 Vol. 002 Doc. 104)



#74 Jesse O. Crary Home (Coll. 003 Vol. 002 Photo 006)



#80 Arthur Park 1953 (Coll. 003 Vol. 002 Photo 010)



Photos of Arthur Park property (Coll. 003 Vol. 002 Photo 010)



#86 A,B, Abrahamson (Coll. 003 Vol. 002 Photo 013)



#87 Lot K. Brown, 87A Biber, 87B Pierce (Coll. 003 Vol. 002 Photo 014)



Frank Robbins home 1910 (Coll. 003 Vol. 002 Photo 025)



N. Leonard Home, William Harvey Vogel, Frederick Emory Vogel (Coll. 003 Vol. 002 Photo 029)



#103B Leonard Chapman Home (Coll. 003 Vol. 002 Photo 030)



#105A Benjamin Ellal 1954 (Coll. 003 Vol. 002 Photo 033)



Fobes - Plymouth Colony Deed 1649 (Coll. 003 Vol. 002 Photo 033)



#105B Iwan, April 1954 (Coll. 003 Vol. 002 Photo 034)



#105 J. Gordon Smiley (Coll. 003 Vol. 002 Photo 035)



106 Heman Davis (Wm Sebastian) (Coll. 003 Vol. 002 Photo 036)



#108 Capt. Moses Hillard 1952 (Coll. 003 Vol. 002 Photo 038)



109 Henry Sebastian 1952 (Coll. 003 Vol. 002 Photo 039)



#110 Adelbert Magee 1946 (Coll. 003 Vol. 002 Photo 040)



#111 Rose MacAvoy home 1952 (Coll. 003 Vol. 002 Photo 042)



#112 G. Kleeman 1954 (Coll. 003 Vol. 002 Photo 043)



#114 Toll Gate Farm 1952 (Coll. 003 Vol. 002 Photo 044)



#116 Henry B. Bates, #117 James B. Bates, #118 John F. Richardson (Coll. 003 Vol. 002 Photo 046)



#119 Fitch-Peckham Homestead (Coll. 003 Vol. 002 Photo 047)



#120 Walter Krohn 1952 (Coll. 003 Vol. 002 Photo 048)



#124 Philip Harvey Home 1952 (Coll. 003 Vol. 002 Photo 053)



#127 John Avery home (Coll. 003 Vol. 002 Photo 054)

#126 Paul Harvey Place 1952 (Coll. 003 Vol. 002 Photo 056)



#128 Amasa Main home 1946 (Coll. 003 Vol. 002 Photo 057)



#130 Paul Park Mill (Coll. 003 Vol. 002 Photo 058)



#142 Joseph LoPresti 1950 (Coll. 003 Vol. 002 Photo 070)



#143 Charles Pendleton 1956 (Coll. 003 Vol. 002 Photo 071)



George Bates 1950 (Coll. 003 Vol. 002 Photo 072)



#146A James Wilson 1950 & 1970 (Coll. 003 Vol. 002 Photo 074)



#153 Laprade Oct. 1952 from S (Coll. 003 Vol. 002 Photo 077)



#154 Cyprian Sterry (Coll. 003 Vol. 002 Photo 078)



#156 Luther Place 1941 (Coll. 003 Vol. 002 Photo 079)



#161 Albert Richmond Place (Coll. 003 Vol. 002 Photo 080)



#166 The Frink Place (Coll. 003 Vol. 002 Photo 084)



Stafford's Mill (Coll. 003 Vol. 015 Photo 43b)



Stafford's Mill Residence (Coll. 003 Vol. 015 Photo 043)



Palmer Homestead (Coll. 003 Vol. 015 Photo 049)



Punderson Home (Coll. 003 Vol. 015 Photo 071)



Merchant Wight Home (Coll. 003 Vol. 015 Photo 072)



Mathewson's Mill Residence (Coll. 003 Vol. 015
Photo 076)



David Baldwin (Photographs Fold. 010)



Introduction (Photographs Fold. 010 Photo 18)



Location of Homes (Photographs Fold. 010 Photo
18)



Asa Benjamin (Photographs Fold. 010 Photo
18.34)