



Silk tapestry (French 18th Century) (1016)



Prince on Horseback (1109)



Untitled (Boat with three male figures) (1331)



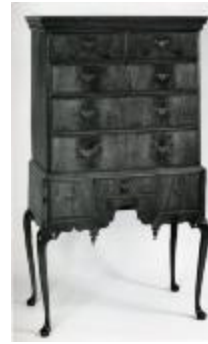
Crowned Buddha (1403)



Icon with large panel of rider and smaller panels of Saints (1510)



Musket (1952.01.05)



Flat-top walnut-veneer high chest (1986.075.055)

Papers, Personal (1993.012)

Copies of Early Miscellaneous Town Records
1639-1784, Windsor (1996.035.001)

Windsor vital records of births, marriages, and
deaths 1704-1846 (1997.017.001)

Windsor vital records of births, marriages, and
deaths 1704-1846 (1997.017.002)

Kettle (1999.052.001)

Sherd (2000.060.006)

Sherd (2000.060.007)

Sherd (2000.060.010)

Sherd (2000.060.011)

Sherd (2000.060.013)

Nail (2003.028.007)

Commission (2003.028.012)



yarn (2004.15.001)

Scrapbook (2005.001.056)

Daniel Howard Scrapbook (2005.001.056.002)

Album (2005.001056.004)



2005.01.372 (2005.01.372)



2005.01.373 (2005.01.373)



2005.01.452 (2005.01.452)



2005.01.453 (2005.01.453)



2005.01.454 (2005.01.454)



2005.01.455 (2005.01.455)



2005.01.456 (2005.01.456)



2005.01.457 (2005.01.457)



2005.01.459 (2005.01.459)



2005.01.460 (2005.01.460)



Lee, Gerald (2005.01.467)



Lloyd, Miss Alzada (2005.01.470)



2005.01.477 (2005.01.477)



2005.01.478 (2005.01.478)



2005.01.479 (2005.01.479)



2005.01.480 (2005.01.480)



2005.01.481 (2005.01.481)



2005.01.482 (2005.01.482)



2005.01.483 (2005.01.483)



2005.01.484 (2005.01.484)



2005.01.485 (2005.01.485)



2005.01.486 (2005.01.486)



2005.01.487 (2005.01.487)



2005.01.516 (2005.01.516)



2005.01.518 (2005.01.518)



2005.01.519 (2005.01.519)



2005.01.520 (2005.01.520)



2-005.01.521 (2005.01.521)



Print, Photographic (2005.01.552)



Mackey, William (2005.01.560)



Mackey, William (2005.01.561)



print, photographic (2005.01.592)

Book, Account (2006.004.063)



Costume, Shoes - Green, White and Red Latchet Shoes (2008.137)



Print, photographic:Print, photographic (2009.10.01)



Print, photographic (2009.10.02)

Print, photographic (2009.10.03)



Print, photographic (2009.10.04)

Print, photographic (2009.10.05)



Print, photographic (2009.10.06)



Print, photographic (2009.10.07)

Map;Map (2011.02.279)

Records of the Church in Wintonbury Parish
(Now Bloomfield), Conn. (2012.066.001)



Records (2013.001.031)

Disc, Digital Video (2015.018.001)



Bible, Titus Teal Memorial Bible
(2018.026.002)



The John Fitch Memorial, 434 King Street, South
Windsor, Connecticut. (2019.000.0108)



East Windsor Academy at Scantic., A Museum of
Local History (newspaper clipping)
(2019.000.0112)



Museum Items on Display from 1700 - 1900
(2019.000.0164)

Chair (2019.020.009)



Tile (2019.020.012)



Horn, Powder (2020.001)

Documents - First Congregational Church papers
(2020.017.024)



Photo- Jedediah Coe House (2020.109.07)



Photo- Jedediah Coe House (2020.109.09)

Papers (2021.013.002)



Plate, commemorative (2022.007)



Portrait, Newport, 18th century (3242)



Portrait, Newport, 18th c (3243)

Innocence (3244)



Woodland Scene (3663)



Colonial Miniature (3665)



Colonial Miniature (3666)



Colonial Miniatures: Portrait of a Man (3667)



Portrait of a Man (3668)



Fantasy Landscape (4246)



Chinese Scroll Painting (5339)



Chinese Scroll Painting (5340)

Baby's Cap, Cotton Netting w/ Floral Embroidery
(70.4)



Household - Rush Light with Candle Socket
(74.1.23)



Household - Large Wooden Bowl (74.10.5)

Pipe Box (79.58)

Wooden Mortar and Pestle (79.638.1-.2)

Hardware - Door Latch (79.687)

Household, Hardware - HL Hinge (79.689)

Household, Furniture - Blue Painted 6 Board
Chest (79.736)



Costume, Shoes - Cream Satin Brocade Latchet
Shoes | Made by A. Lee (80.430)



Mote Spoon (81.1)



Winder, yard (aka: Reel, Clock) (92.17.6)

Note Card - Thomas Scranton Family Record
(A2023.ScrantonThomas.001)

Genealogical Notes - Family Lineage of William
Scranton Gov. of Pennsylvania
(A2023.ScrantonWilliam.001)

Genealogical Notes - Willard Family of Madison,
CT (A2023.WillardFamily.001)

Transcription of Preston Land Records, Volume
6, page 68 (Coll. 002 Fold 014 Doc. 008)



Obadiah Gore sells to Pelatiah Fitch (Coll. 002
Fold. 002 Doc. 001)

Blodgett land research (Coll. 003 Fold. 007 Doc.
002)

Land Transfers (multiple) (Coll. 003 Fold. 018 Doc. 011)

Land Transfers-Multiple
(Tracy/Fobes/Ames/Treat/Rosseter/Smith (Coll. 003 Fold. 018 Doc. 024)



Preston Land Records Frink, Jedediah/Stantons, etc. (Coll. 003 Fold. 019 Doc. 002)

Park and Parke land records 1686-1750 (Coll. 003 Fold. 033 Doc. 002)

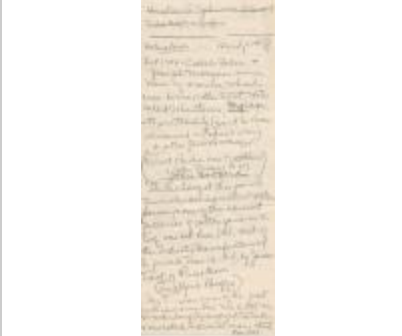
Parke Land Records - Sold (Coll. 003 Fold. 033 Doc. 004)



Wills of Spicer Family and Joseph Tyler (Coll. 003 Fold. 040 Doc. 003)



Treat Genealogy (Coll. 003 Fold. 046 Doc. 001)



Notes from Treat information in Hurd p. 745-786 (Coll. 003 Fold. 046 Doc. 003)



Salmon Treat Sold (Coll. 003 Fold. 047 Doc. 001)



Salmon Treat property description and boundaries (Coll. 003 Fold. 047 Doc. 002)



Salmon Treat Land Diagrams (Coll. 003 Fold. 047 Doc. 003)



List of Witter land deals from Preston land records by Volume and page (Coll. 003 Fold. 052 Doc. 006)



Notes on Prosper Wetmore & Christopher Read
(Coll. 003 Fold. 057 Doc. 005)



Church Membership - Preston City
Congregational Church 1697 - 1976 (Coll. 003
Fold. 059 Doc. 002)



A Book of Record for the First Church in Preston
Transcripts pg. 4 (Coll. 003 Fold. 061 Doc. 004)



A Book of Record for the First Church in Preston
Transcripts pg. 6 (Coll. 003 Fold. 061 Doc. 006)



A Book of Record for the First Church in Preston
Transcripts pg. 7 (Coll. 003 Fold. 061 Doc. 007)



A Book of Record for the First Church in Preston
Transcripts pg. 14 (Coll. 003 Fold. 061 Doc. 014)



A Book of Record for the First Church in Preston
Transcripts pg. 16-32 (Coll. 003 Fold. 061 Doc.
016)



Map of Long Society property lines c. 1781
(Coll. 003 Fold. 069 Doc. 006)



Maps of Long Society property lines c. 1742 and
1812 (Coll. 003 Fold. 069 Doc. 012)



Four maps of Long Society property lines (Coll.
003 Fold. 069 Doc. 015)



Fragments - lists of Long Society property
transfers (Coll. 003 Fold. 069 Doc. 016)



Large Map of Long Society 1723-1838 (Coll. 003
Fold. 069 Doc. 017)



Notes on Boardman from Modern History of New London County (Coll. 003 Fold. 073 Doc. 005)



Notes on Peckham from Modern History of New London County (Coll. 003 Fold. 073 Doc. 006)



Notes on Frink from Modern History of New London County (Coll. 003 Fold. 073 Doc. 008)



Notes on Coit from Modern History of New London County (Coll. 003 Fold. 073 Doc. 010)



Notes on various families from Modern History of New London County (Coll. 003 Fold. 073 Doc. 011)



Preston - 1686-1886 (Coll. 003 Fold. 073 Doc. 032)



Notes from Sons of the American Revolution 1893-94 (Coll. 003 Fold. 074 Doc. 001)



Diagram of Poquetanuck property ownership before 1800 (Coll. 003 Fold. 075 Doc. 007)



Poquetanock land drawing (Coll. 003 Fold. 075 Doc. 014)



Preston land records 1715-1770 (Coll. 003 Fold. 075 Doc. 016)



Humphrey Avery land (Coll. 003 Fold. 075 Doc. 027)



Dr. Avery Downer Place (Coll. 003 Vol. 002 Doc. 004)



#87 Charles E. Abrahamson (Coll. 003 Vol. 002 Doc. 014)



#105B Mrs. Anna Iwan (Coll. 003 Vol. 002 Doc. 037)



137 William Morel (Coll. 003 Vol. 002 Doc. 061)



#139B The Joseph Witter Farm (Coll. 003 Vol. 002 Doc. 067)



#139E The Elisha Park Farm (Coll. 003 Vol. 002 Doc. 070)



#164 John Maxson Richmond (Coll. 003 Vol. 002 Doc. 096)



#167 Viola Johnson farm - drawn maps (Coll. 003 Vol. 002 Doc. 101)



#168 Konon Klemczuk (Ira V. Rude) (Coll. 003 Vol. 002 Doc. 102)



Revolving Broiler (HW1902.119)



Flax or Hemp Brake (HW1902.206)



Cloak (HW1902.243)

Spoon (HW1903.048)

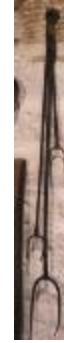
Skimmer (HW1903.049)



Cooking Fork (HW1904.034)



Mold, Candle (HW1904.053a)



Fork (HW1904.063)

Mortar (HW1904.064a)

Pestle (HW1904.064b)



Brazier (HW1904.094)

Lacemaking Bobbin (HW1905.027s)

Lace Bobbin (HW1906.011a)

Lace Bobbin (HW1906.011b)

Andiron (HW1907.016a)

Andiron (HW1907.016b)

Trammel (HW1908.010a-b)

Chair (HW1908.033)

Chair (HW1908.034)



Busk (HW1909.040a)



Busk (HW1909.040b)

Block, Hat (HW1912.033)

Table (HW1914.017)

Andiron (HW1916.052a)

Andiron (HW1916.052b)

Chest On Frame (HW1917.008)

Chest (HW1921.007)

Tongs, Fireplace (HW1941.003)

Spatula or Peel (HW1942.013)

Candlestick (HW1943.004)



Quilting Frame (HW1944.002)

Hook, Pot (HW1945.007)

Hook, Pot (HW1945.008)

Lamp, Betty (HW1946.003)

Trivet (HW1947.007)

Table (HW1950.002)

Lantern, Candle (HW1951.010)

Candlestand (HW1960.004)

Bed, Trundle (HW1960.006)

Toaster (HW1972.001)



Powder Horn (HW1973.112)

Churn, Butter (HW1973.116)

Footwarmer (HW1973.141)

Hook, Pot (HW1973.175)

Stone Anchor (HW1973.191a)



Stone Anchor (HW1973.191b)



Clock Reel (HW1973.192)



Swift (HW1973.193)



Worm (HW1973.330)



Bayonet (HW1973.890a)



Dressing Case (HW1983.014b1-b2)



Jar (HW2006.074)



Loom;Dutch Barn Frame Loom (SHS 2412)



Coin;Coin (X70.1000)



Tankard (X70.566)



Tankard (X70.655)



Tankard (X70.660)



Quilt (X72.348)